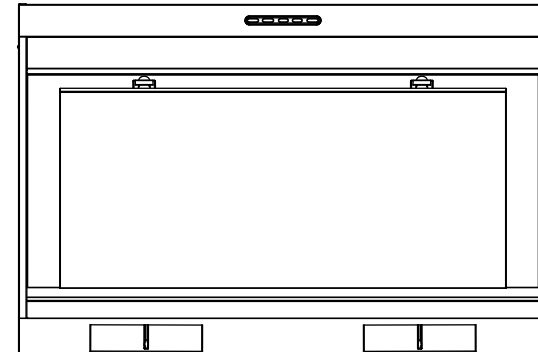


TOTOKI

排油煙機 Kitchen Range Hood

- 使用說明書 Instruction manual
S1628

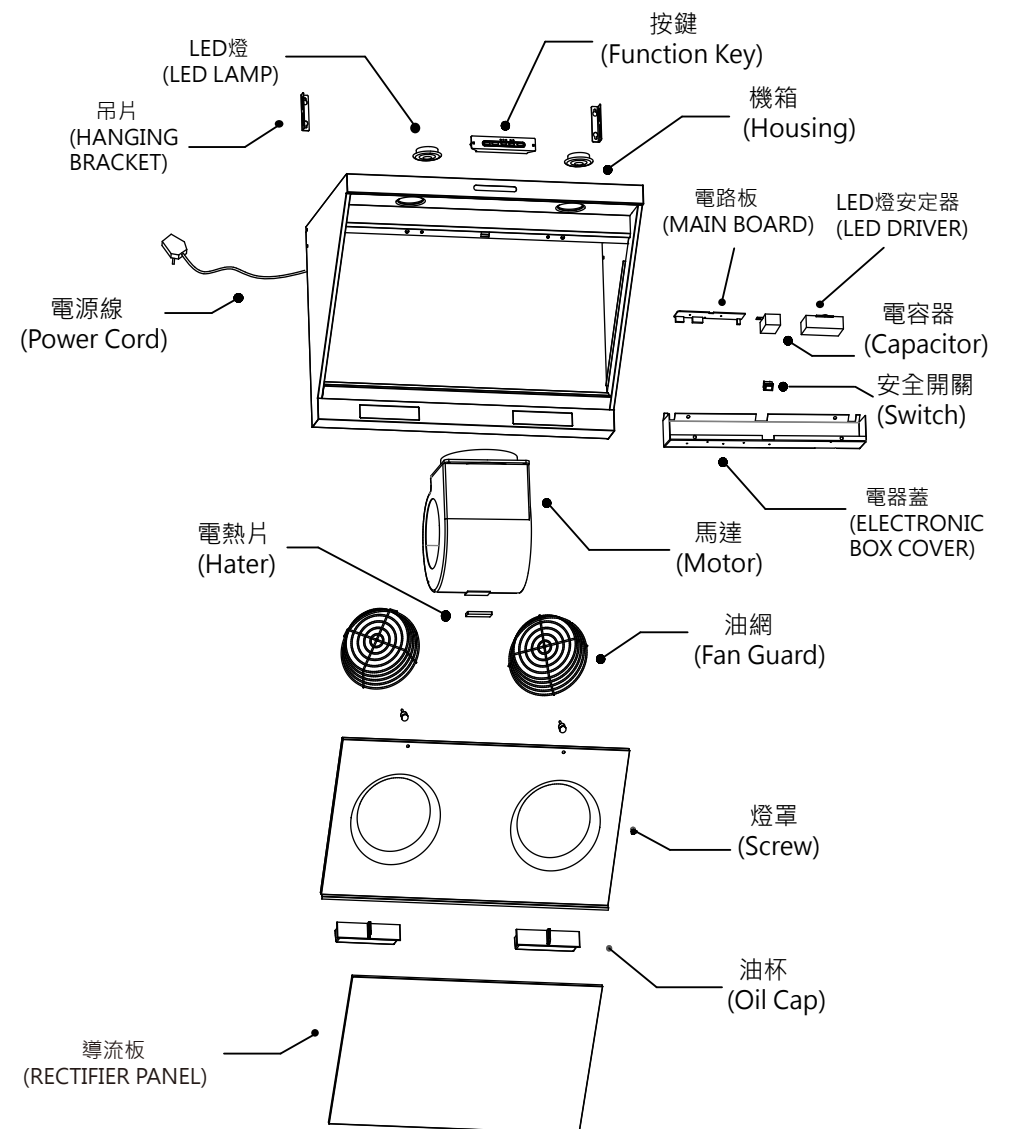


TOTOKI

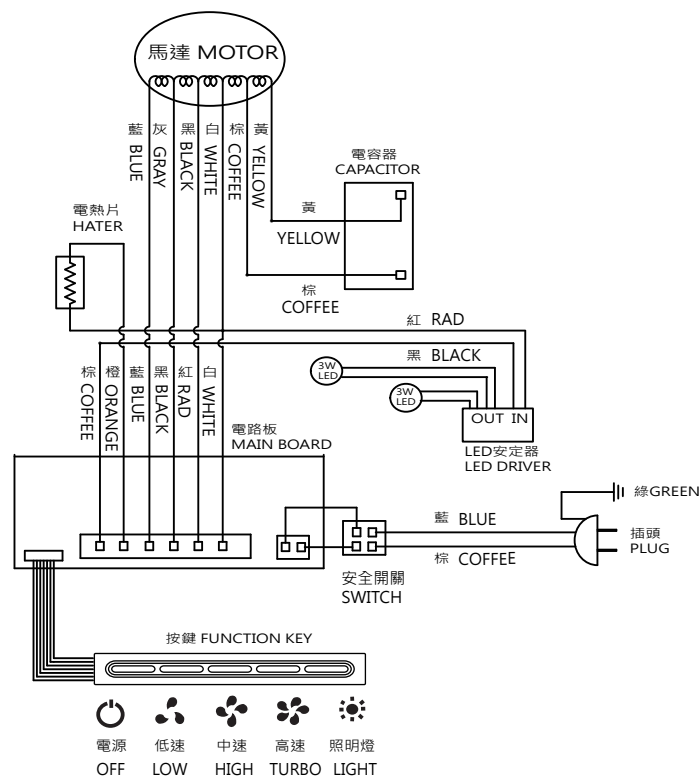
總代理:
栢基電器有限公司 Pakkey Limited
香港沙田大圍成運路21號群力工業大廈2樓3室
電話:26936983 傳真: 31561144
維修電話 : 26936071 查詢熱線 : 26936983

安裝及使用前請詳閱本說明書,並妥善保存。
Before installation and use , please read the instructions carefully
and retain for future reference.

九. 圖解說明 Illustration



七. 線路圖 Circuit Diagram



八. 附屬零件 Accessories

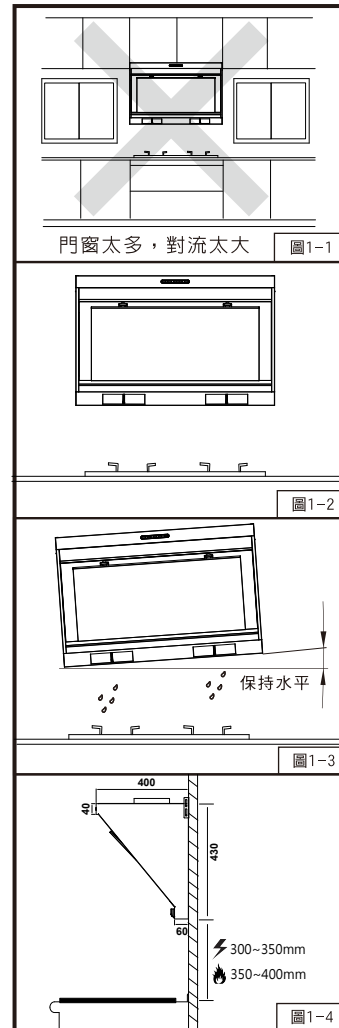
零件名稱 Item	數量 Quantity
油杯 Oil Cap	2
風管圈 Ducts	1
燈泡 Lamp	1
使用說明書 Instruction Manual	1

目錄 Table of Content

一. 安裝原則	01
1. Installation Guide	06
二. 安裝施工說明	02
2. Installation Guide	07
三. 使用方法	03
3. Operation	08
四. 注意事項	04
4. Precautions	09
五. 清潔與保養	04
5. Cleaning and Maintenance	09
六. 異常狀況處理	05
6. Troubleshooting	10
七. 線路圖 Circuit Diagram	11
八. 附屬零件 Accessories	11
九. 圖解說明 Illustration	12

一. 安裝原則

1. 啟動油煙機前及當運作進行中，打開太多門或窗可能引發擾流而降低油煙機抽吸效果，關上相關門或窗有助增強油煙機抽吸效果。(圖1-1)
2. 當抽油煙機與其他煮食爐同時操作時，請保持室內空氣流通。
3. 抽油煙機安裝於爐具之正上方。(圖1-2)
4. 安裝後之機體不應歪斜，應保持水平，否則集油杯內積油將傾向單邊而溢出機體外。(圖1-3)
5. 排風出口至機體之距離，應盡量避免過長，以免氣流擠壓於管內，影響其排風效果。
6. 抽油煙機安裝高度自本機機底至電爐/瓦斯爐面之距離以35~45毫米為最理想。(圖1-4)
7. 排風管安裝時，不得與其他氣體燃氣爐具之排放口安裝在同一煙囪之通道內。
8. 固定抽油煙機時，需將螺絲鎖緊固定於牆上，不可將油機掛在螺絲上。



6. Troubleshooting

1. When there is a problem with the machine and is unable to solve by user, turn off the machine and contact service centre.
2. Disconnect the power supply whenever there is a malfunction phenomenon.

Status	Causes and Methods of Repairing
Power supply cord is broken	★ Please contact our service centre.
The lamp works but the motor doesn't run	★ Please contact our service centre.
Oil leaks from the housing cover	A. Check if the oil cup is full. B. Check if the oil cup is broken, or it is in right position.
Machine vibration	A. If the machine is screwed tightly. B. If the machine is in level position.
Suction becomes weak	A. The distance between range hood and range top is too far away. B. Too many doors or windows around the hood to cause convection. C. The machine is installed in front of window. D. Please refer to the Installation Procedures and Safety Guides for good installation.

4. Precautions

1. The range hood must be earthed.
2. Disconnect power supply before cleaning the hood.
3. Most of soot will be exhausted through the pipe to outdoor when range hood is in operation, so only negligibe oil will be left in the oil cup.
4. Do not splash or spray the range hood with water, the machine may damage.

5. Cleaning and Maintenance

★ Good maintenance allows the best performance of the machine and prolongs it's operation life. Please take good care of your machine.

★ Turn off power supply before maintenance.

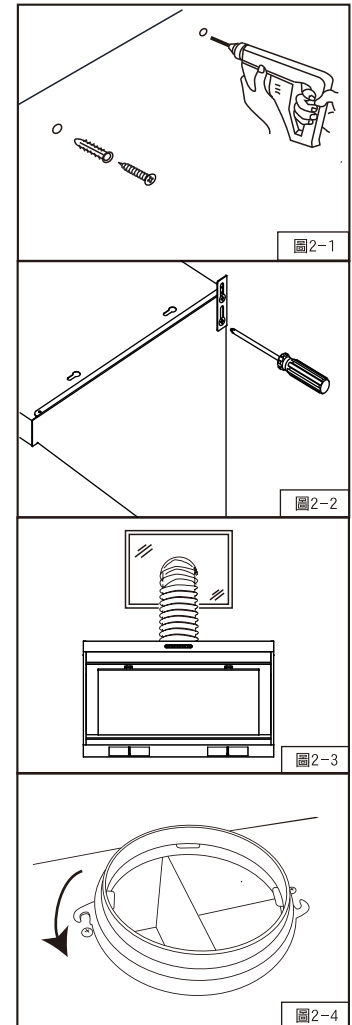
1. Always keep machine clean.

After each use, please clean the machine housing and rectifier panel with a dry cloth or a wet cloth with mild detergent.

2. Empty dirty oil cup when it is 80% full of oil, as to avoid overflow.

二. 安裝施工說明

1. 打開紙箱檢視保證書、說明書、排風管和風管座等附屬配件是否齊全。
2. 安裝前先接上電源，測試按鍵上之各項功能是否正常運作(馬達運轉、照明)。
3. 在已選定的安裝位置上，以1/4"鑽頭鑽孔，將孔塞(俗稱塑膠栓)塞入孔內，並於配合吊鐵鑰匙孔之孔位鎖上螺釘。(圖2-1)
4. 調整機體兩側之掛鉤(吊鐵)(圖2-2)，將機體懸掛於螺釘上，懸掛後，必需於各吊鐵圓孔處再鎖上一螺釘與牆壁固定。
5. 懸掛後，機體要保持一定水平。(安裝原則裡第3項已敘述)
6. 排風管之安裝位置：
 - A. 選擇最近可通向室外之窗戶，裝設排風管穿窗而出。(圖2-3)
 - B. 或選可通向室外之牆壁(非隔間牆壁)打洞，裝設排風管穿牆而出。
7. 裝設排風管：(圖2-4)
將排風管之一端套入合適之風管座，並將風管座端固定於機體出風口及排風管另一端固定於排氣孔上。

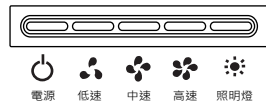


三. 使用方法

1. 本機之操作：

要使用時，依所需功能觸按機體前方之開關按鍵。

按鍵說明：



✱ 馬達持續運轉超過30分鐘關機後,電熱除油功能會自動除油15分鐘後,馬達會再運轉1分鐘關機。

✱ 手動電熱除油:

按電源開關2秒後即可進入電熱除油裝置。

2. 集油杯之裝拆：

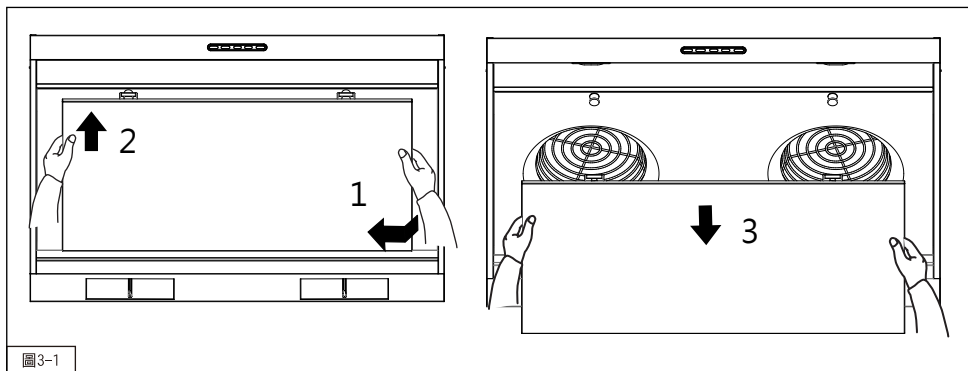
- 當集油杯內所盛之油汁已達八分滿，將油污倒掉，然後用清潔劑清洗，再裝回原固定位置。

- 每台油煙機附有兩個油杯。
- 集油杯取出時，用手將集油杯略抬高並拉出，裝回時將集油杯置之集油槽中，推入至底即可。

3. 清潔方法：

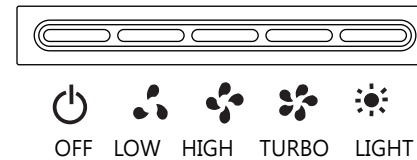
- 取下集油杯，並將機身導流板卸下(如圖3-1)；
- 清潔時，內外表面使用軟布沾中性清潔劑擦拭，避免括花機體及導流板內外表面。
- 清潔後，裝回導流板及集油杯。

注意：清潔抽油煙機前應先拔下插頭。請檢查導流板上掛鉤與機體的連接是否牢固，以策安全。



3. Operation

Press the relevant button below for the operation desired.



✱ Auto-thermal degreasing mode :

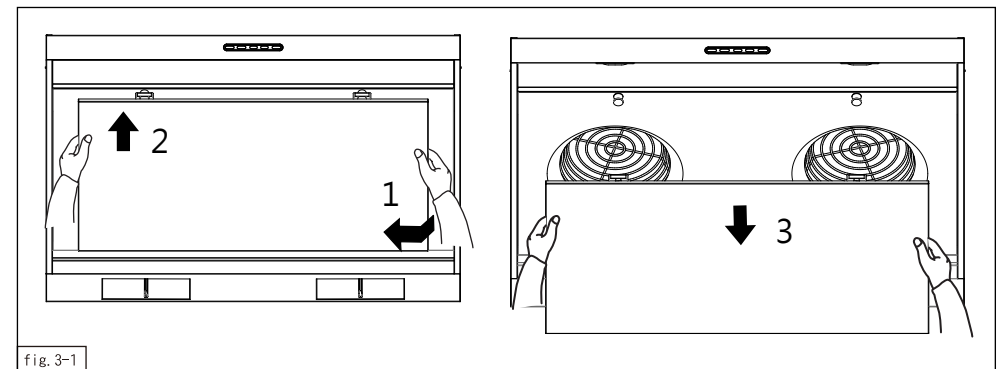
It works automatically once the hood is switched off after using continuously for over 30 minutes, The heater will be on for 15 minutes and follows with 1 minute high speed fan operation.

✱ Manual thermal degreasing mode:

Press Power ON/OFF switch for 2 seconds to activate the thermal degreasing mode.

2. Assembling and disassembling of oil cups:

- Empty oil cup when it is more than 80% full. Pour out dirty oil and clean the cup with detergent. Then put it back to its original position.



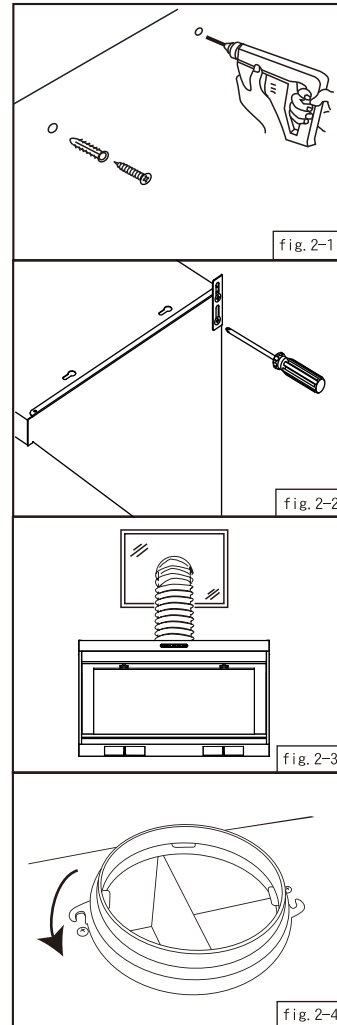
- To remove oil cup, hold the bottom and pull down along the slot. Reverse the procedure to put it back.
- There are two plastic oil cups enclosed with the machine.

3. Cleaning:

- Disassemble the oil cups. Take down the rectifier panel from the hook. Use soft cloth to clean both sides of it with liquid detergent and then wipe with wet cloth. Avoid using any harsh brush to rub the machine body (fig. 3-1)
- After cleaning, assemble the parts in reverse procedures as mentioned above.
- ✱ Make sure that the rectifier panel is securely hooked with the hood body.

2. Installation Guide

1. Check it warranty card, instruction booklet, pipe adapter and so forth accessories are in carton box.
2. Before installation, check every function of each switch are in good condition (such as motor running, illumination).
3. Select suitable position for installation, drill hole on the wall by using $\frac{1}{4}$ "thread bit and put screw lock inside the hole to fit screw with matching hanging hole (Fig2-1).
4. Adjust hangers of both sides, hang machine onto screws and the fixing holes must be screwed on the wall. (Fig2-2)
5. The machine must be in level position.
6. Installation position of Exhaust Vent:
 - 1) Exhaust vent must attach and penetrate the closest window above the machine.
7. Installation of Exhaust Pipe (Fig2-3,2-4)
Insert one side of exhaust pipe to the adapter fitted on the top vent of machine. Then, another side of pipe is fitted to go through exhaust hole.



四. 注意事項

1. 電源插座必須安裝接地線。
2. 清潔抽油煙機前應先關掉電源，並拔下插頭。
3. 抽油煙機使用時，可將大部份油煙抽出室外，故此油杯油污存量很少。
4. 請勿直接潑水噴淋機體以免損壞電器機件。

五. 清潔與保養

- ★為發揮本機最佳性能，延長其使用年限，應經常注意保養。
- ★保養維修時應將插頭拔掉，切斷電源！

1. 清潔機體：

經常保持機體外部潔淨，每次使用後請用乾布或沾有中性清潔劑之抹布，擦拭機體外殼與導流板，經常保持乾淨以維護其美觀及衛生。

2. 清除積存之油污：

當油杯內所盛之油汁已達八分滿，需將油汁倒掉，以免溢出。

六. 異常狀況處理

1. 使用中發現異常狀況時，如未能自行解決問題，請關閉電源和拔掉插頭，並聯絡維修中心服務。
2. 處理異常狀況時，請先拔掉插頭。

狀況	原因及處置方法
電源線損壞	★請聯絡維修中心。
燈亮馬達不轉	★請聯絡維修中心。
底板漏油	A. 油杯是否滿溢。 B. 油杯是否有破裂；油杯安裝是否妥當。
機體震動	A. 查看機身是否安裝妥當，沒任何鬆脫。 B. 查看機身安裝是否左、右方高低不平。
抽力不強	A. 抽油煙機與爐面的距離太高。 B. 抽油煙機周圍環境門窗通風多，對流太大。 C. 抽油煙機裝置在窗戶處。 D. 參考安裝原則及安裝注意事項進行安裝。

1. Installation Guide

1. Air turbulence coming from the window(s) or door(s) may affect the effectiveness of the range hood. It helps by closing certain of them before using the hood or during using the hood (Fig 1-1).
2. Maintain adequate ventilation of room when the range hood operate with gas or electric stove and other heating appliances at the same time.
3. Machine shall be installed on wall or underneath a cabinet (Fig1-2).
4. The machine must be in level position, otherwise grease in oil cup may leak (Fig1-3).
5. Distance between exhaust vent and machine shall be suitable and kept as short as possible so that the efficiency of exhaustion will not be affected.
6. Keep a distance of 35~45cm between stove-top and the bottom plate of the hood (Fig 1-4).
7. Exhaust vent must not be discharged into a duct which is used also for other cooking or heating appliances.
8. Range Hood must be installed by firmly attaching to solid wall with screws.

